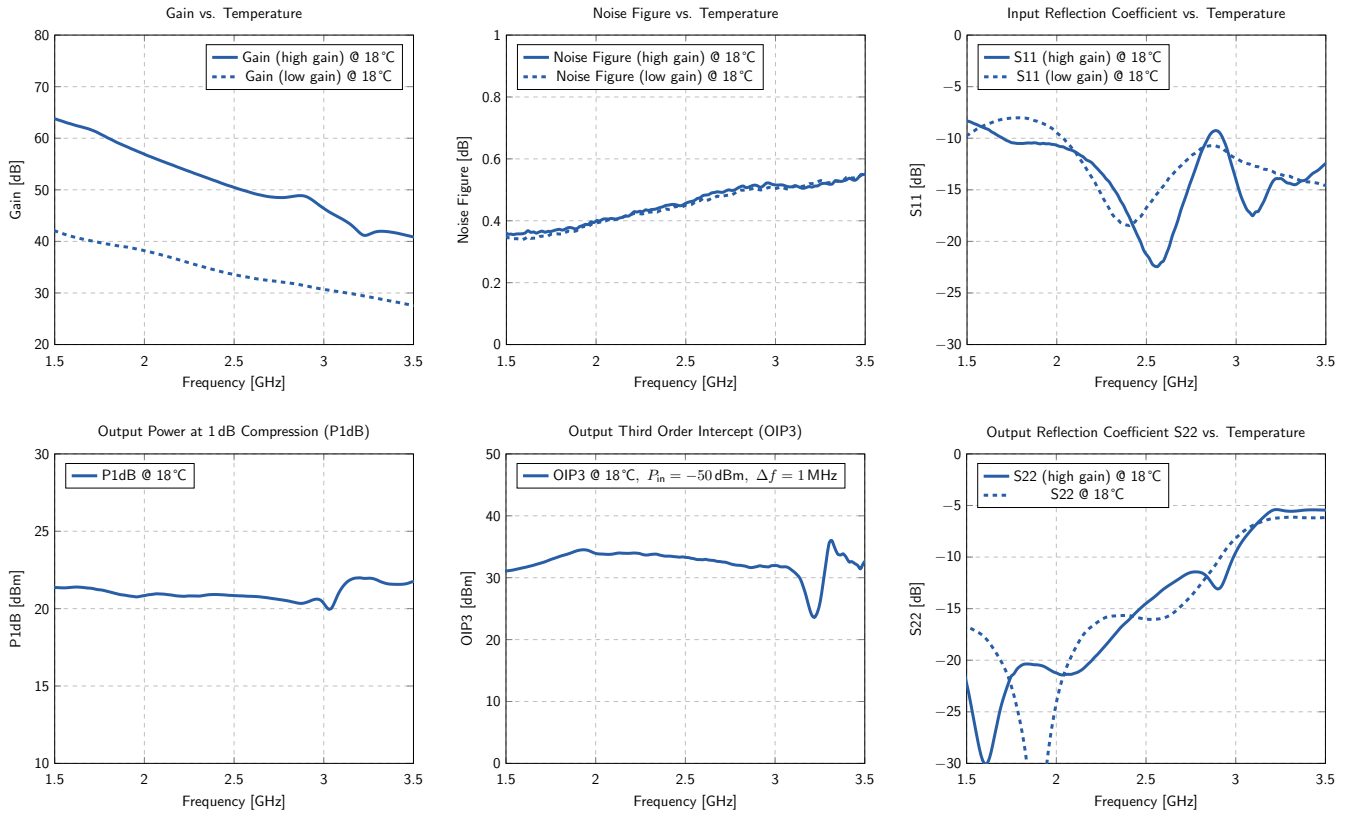


KU LNA 200250 A – SMA / A/B – N — Super Low Noise Preamplifier

Application Note: Broadband measurements from 1.5 GHz to 3.5 GHz

Typical Curves

(DC Voltage = 12 V, DC Current = 110 mA, measured in high-gain mode unless otherwise noted)



Typical Data

(DC Voltage = 12 V, DC Current = 110 mA, measured in high-gain mode)

| Frequency [MHz] | Gain [dB] | Noise Figure [dB] | S11 [dB] | S22 [dB] | P1dB [dBm] | IP3 [dBm] |
|-----------------|-----------|-------------------|----------|----------|------------|-----------|
| 1500 | 63.7 | 0.36 | -8.4 | -22.9 | 21.4 | 31.1 |
| 2000 | 56.8 | 0.40 | -10.7 | -21.3 | 20.9 | 33.9 |
| 2500 | 50.5 | 0.46 | -21.3 | -14.5 | 20.8 | 33.3 |
| 3000 | 46.5 | 0.52 | -13.8 | -9.7 | 20.4 | 32.0 |
| 3500 | 40.8 | 0.55 | -12.3 | -5.5 | 21.8 | 32.9 |

Notice

Specification and datasheet are available on request or downloadable from website.